

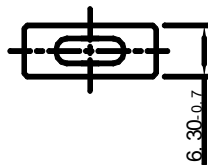
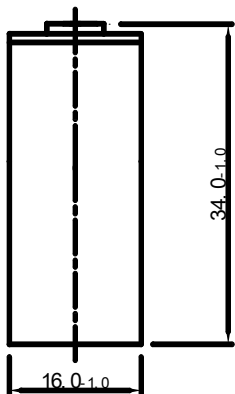
Ni-MH Battery Individual Data Sheets

(TYPE) : H550 3/5F6S

Specifications of single cell

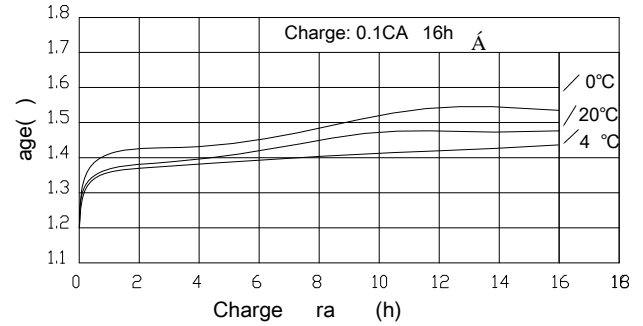
Nominal voltage		1.2V	
Capacity		0.2CA Discharge	1.0CA Discharge
	Typical	310min	58min
	Minimum	300min	54min
Dimensions		mm	
	Height	34.0 ^{-1.0}	
	Width	16.0 ^{-1.0}	
	Thickness	6.3 ^{-0.7}	
Weight(Approximately)		gram	
		13.0	
Internal Impedance At 1000 Hz		≤30mΩ (After Charge)	
Charge	Standard	55mA(0.1CA)×16h	
	Rapid	550mA(1.0CA)×1.2h	
Ambient temperature		°C	
	Charge	Standard	0°C to 45°C
		Rapid	10°C to 40°C
	Discharge		-20°C to 65°C
Storage		-20°C to 45°C	

PVC (Dimensions with tube)

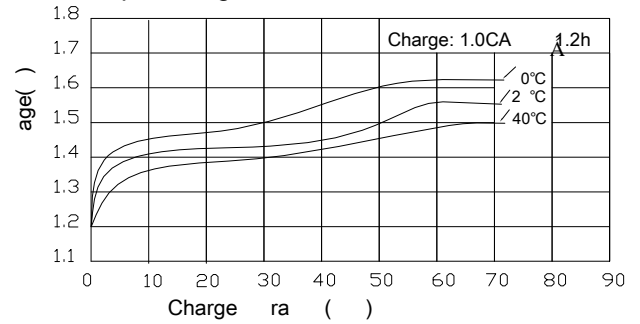


Typical characteristics

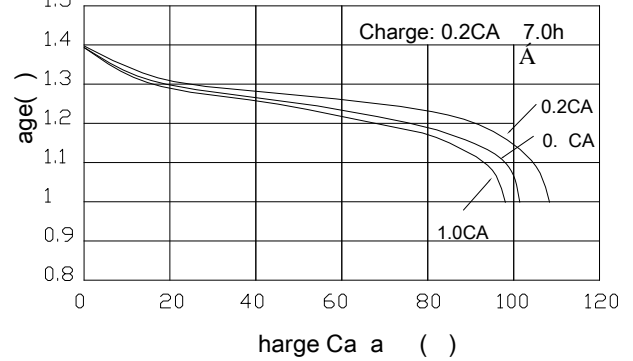
Standard charge characteristics



Rapid charge characteristics

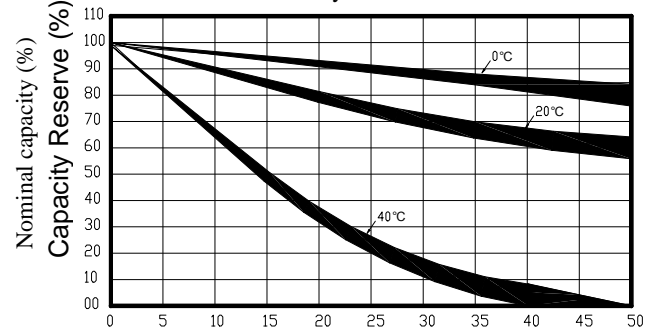


Discharge characteristics



Charge retention curves of Ni-MH cylindrical cell At various storage temperature

Number of cycles life curve



Note:

1. Nominal capacity, rated at 0.2CA 20°C.
2. Average capacity, for reference only.
3. Weight and internal impedance are For reference only.
4. Standard according as IEC of test cycle life.

Approved :

Checked :

Documented :

Subject to be modified without prior notice.